



An Integrative Solution For Joint Health

Quick Relief and Long Lasting




What is JointAlive® ?

JointAlive® is a specially formulated botanical blend with three traditional Chinese herbs: Epimedium brevicornum Maxim, Discorea nipponica Makino and Salvia miltiorrhiza Bunge. Its development was based on 2,000 years Traditional Chinese Medicine history. We have hand-selected ingredients from our Authentic Medicinal Cultivation Areas with full traceability from harvest to Extract.

Health Benefits of JointAlive®


- ✔ Supports Joint Flexibility and Mobility
- ✔ Maintains Healthy Joint Functions


Why Choose JointAlive® ?

 Effective Herbal Formulation


 Small Dose at 300-600 mg/day

 Strict Quality Control

 Established Mechanism of Action

 Discomfort relief 6.5 times better than Glucosamine

 Patent Protection

 Safe and Natural

Product Stability

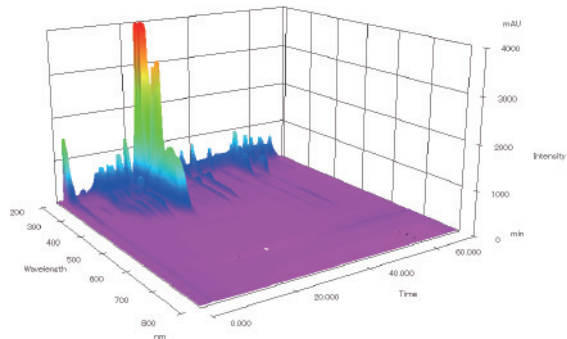
Two-year shelf life if stored under cool, dry and dark conditions

Our Customized Service also includes:

Contract Manufacturing for Finished Product and Botanical Extraction
Formulation Design
Functionality Evaluation

Specification

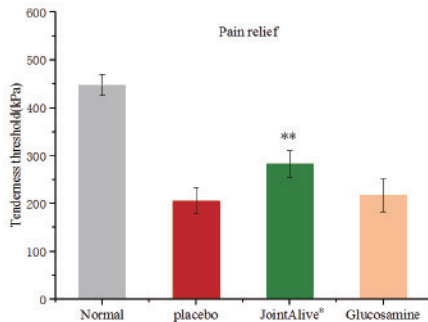
Item	Specification
Appearance	Yellow brown free flowing powder
Odor	Characteristic
Taste	Characteristic
Particle Size	NLT 90% thru 80 mesh
Bulk Density (loose)	NLT 0.4 g/ml
Moisture	NMT 5%
Solubility in Water	Partially soluble
Icariin	NLT 2.5%
Diosgenin	NLT 4.0%
Tanshinoinine IIA	NLT 0.20%



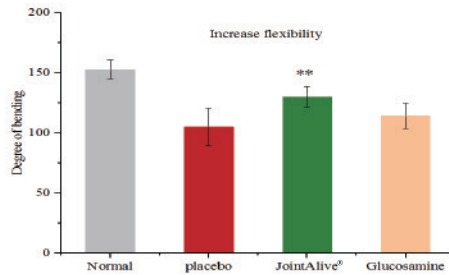
ID Test by HPLC Fingerprint for Each Batch
ID Test by HPTLC For Each Extract

In Vitro and In Vivo Clinical Studies

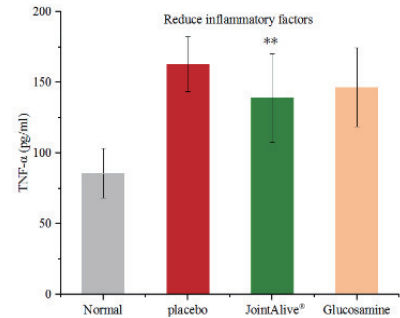
Taking JointAlive® for 4 weeks resulted in significantly joint pain relief, inflammation reduction and improvement of the joint flexibility in arthritic rats.



The rat study shows that JointAlive® effectively increases the threshold of the arthritis pain and reduces pain sensitivity. It is superior to the placebo (** $P < 0.01$) and is 6.5 times more effective than the glucosamine group.



The rat study indicates that JointAlive® improves joint stiffness and increases joint flexibility of arthritic rats. It is superior to the placebo (** $P < 0.01$) and is 3 times more effective than the glucosamine group.



In vivo rat study, JointAlive® reduces the concentration of proinflammatory molecules in the serum of arthritic rats, which is superior to the placebo (** $P < 0.01$) and is 2 times more effective than the glucosamine group.

Human Clinical Trial

A single center, randomized, double-blind, placebo controlled parallel study was conducted to study the safety and efficacy of JointAlive® in relieving joint pain/swelling/stiffness and increasing joint flexibility in men and women with mild to moderate knee arthritis. 72 healthy elderly men and women (36 participants in each group) were selected with mild to moderate knee arthritis. The clinical study is completed in 2021.