

CLINICALLY PROVEN FORMULA TO

Support Hormonal Balance and Bone Health



Improves Bone Mineral Density,
Bone Strength, and Bone Elasticity



Improves Calcium Absorption



Balances Woman's Hormones



Patent pending No. 17035808

EuBone® is a specially formulated botanical blend with three traditional Asian herbs: *Eucommia ulmoides*, *Drynaria fortunei* and *Cuscuta chinensis*.

Why Choose EuBone®

The first herbal formula to bidirectionally regulate the calcium and phosphorus metabolism.

Bidirectionally regulates the balance of osteoblasts and osteoclasts.

Regulates the bone metabolism signaling pathway by decreasing the ratio of RANKL/OPG by 45%.

Supported forms:

Capsules, Tablet

Dosage:

500-1000 mg/day

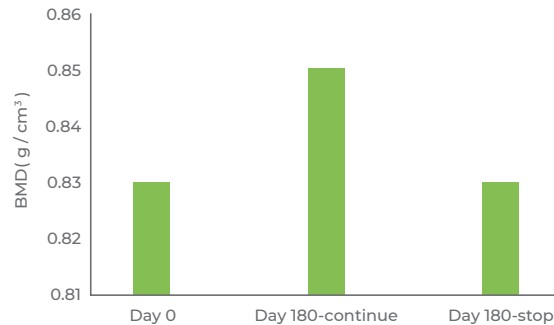
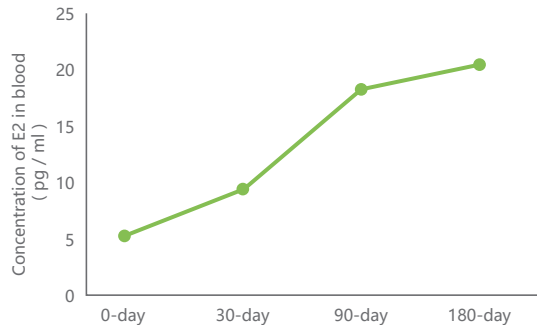
Applicable to:

Menopausal and postmenopausal women

Middle-aged and elderly who are prone to fracture

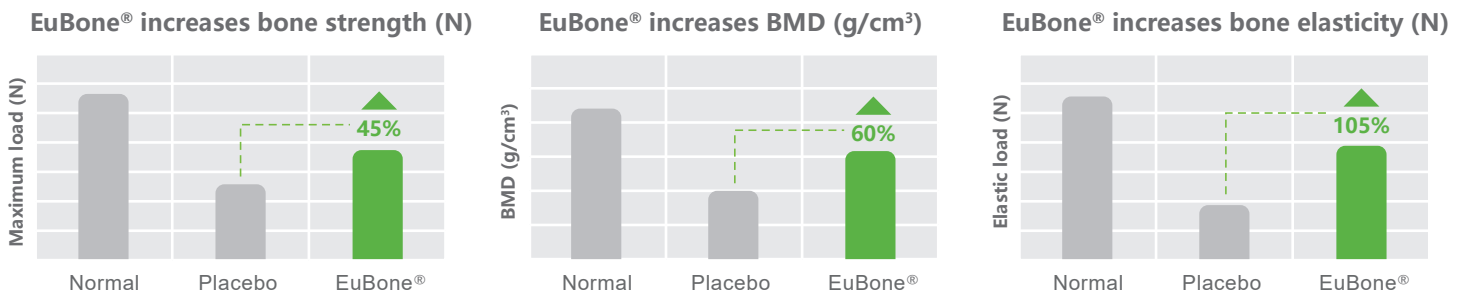
Human Clinical Study

A 180-day, single-center, open-label human clinical study was conducted to prove the efficacy and safety of EuBone®. The subjects aged between 50 and 80 years old with mild to moderate osteoporosis were enrolled. The results showed that EuBone® formulation can significantly increase the estradiol level in postmenopausal women by 2.9 times, and further promote their bone health by Bone Mineral Density (BMD) up to 2.4%.

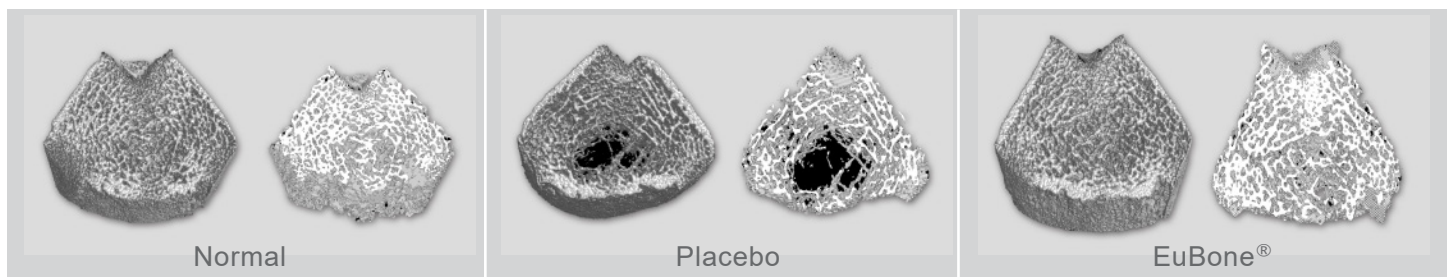


Animal Trial

EuBone® can significantly improve the bone microstructure of osteoporotic model rats, increase bone density, bone strength, bone elasticity and reduce the risk of fracture.



3D-microCT images



*Our clinical trial is ongoing and scheduled to be completed by the end of 2021.



www.chenland.com

Add: 3 Park Plaza, Suite 0410, Irvine, CA 92614, USA Tel: (949) 308-2270

Asia Pacific Office: 0532-83260709 Email: info@chenland.com/salesasia@chenland.com

Product Stability

Two-year shelf life if stored under cool, dry and dark conditions

Our Customized Service also Includes:

Contract Manufacturing for Finished Product and Botanical Extraction
Formulation Design
Functionality Evaluation